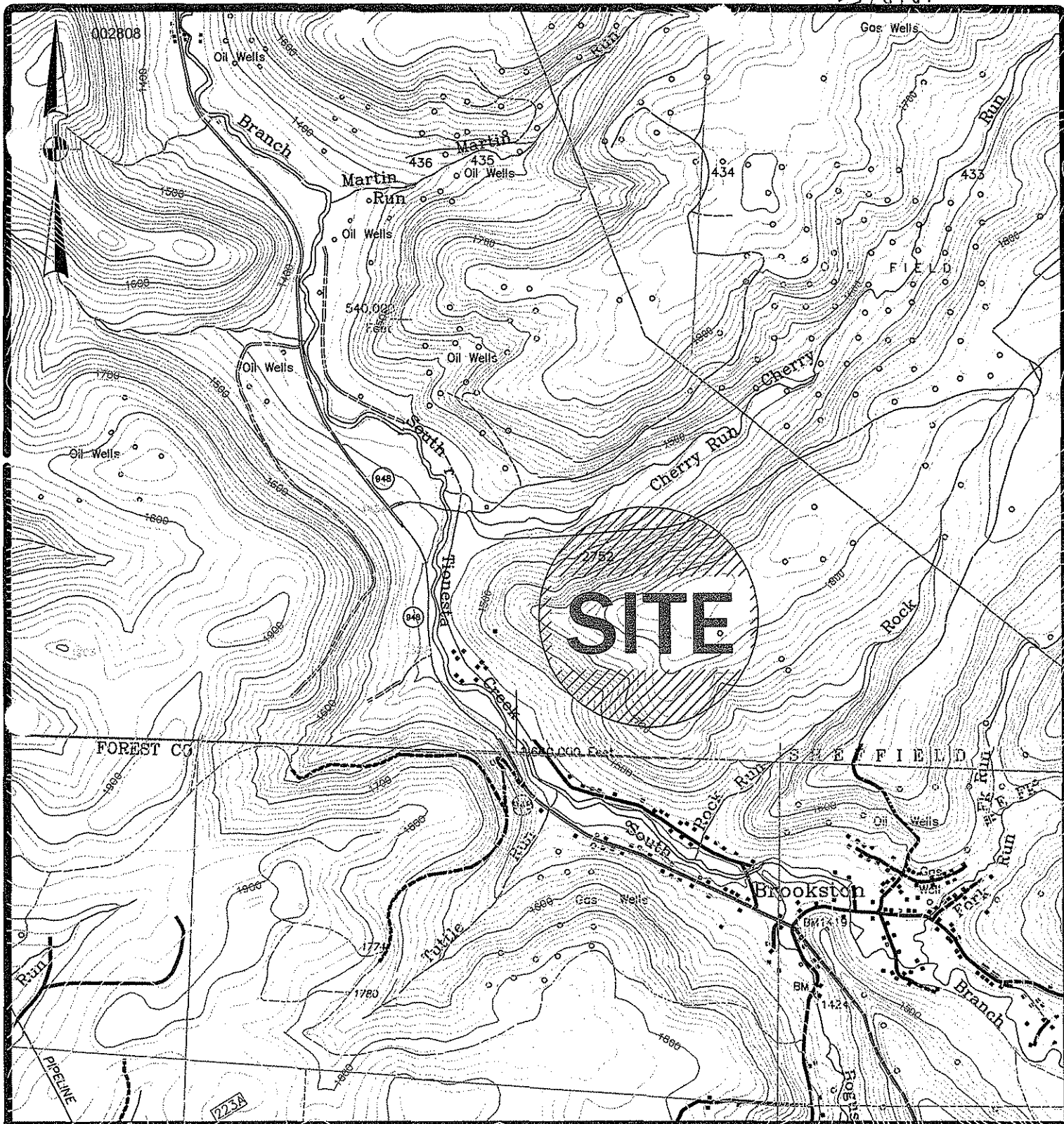




518107



Scale: 1" = 2000'

Date: 03/19/2007



4 Harmer Street, Box 14 • Warren, PA 16365  
 (814)723-1175 • Fax:(814)723-1176  
 hampson@westpa.net

Exhibit-Location Map  
 for  
 Duhring Resource Company  
 Cherry Run Area  
*Allegheny National Forest Wt.2752, Lot 8*  
 Sheffield Township, Warren County  
 Pennsylvania