

CRUISE REPORT HEADER & CERTIFICATION

CRUISE#: 30714 SALE#: 30714
SALENAME: OGM B028 DUHREC 5W
RUN DATE & TIME: 03-27-2009 16:50:20

Year: 2009 Region: 09 Forest: 19 District: 03

Remarks:

FILENAME: C:\Documents and Settings\darcher\My Documents\Timber\Sales\2009\OGM\DUH REC 5W\30714.crz
REPORTS: A1,A2,A11,B1,CP1,DS1,R901,UC5,UC6,

***** CRUISE CERTIFICATION *****

I certify that the timber for the OGMB028DUHREC5W timber sale
has been designated and cruised by the procedures and standards in
FSH 2409.12, Timber Cruising Handbook. Records of checks are on file
at the District Ranger Office,

BRADFORD
RANGER DISTRICT
[Signature]
DISTRICT RANGER

WARREN
(name of headquarters town)
4/1/09
DATE

Developed and Maintained By:
USDA FOREST SERVICE
WASHINGTON OFFICE TIMBER MANAGEMENT
FORT COLLINS, COLORADO (970)295-5776

VERSION: 01.16.2009
VOLUME LIBRARY VERSION: 01.28.2009
NATIONAL CRUISE PROCESSING PROGRAM

VOLUME EQUATION TABLE

CRUISE#: 30714 SALE#: 30714
 SALENAME: OGM B028 DUHREC 5W
 RUN DATE & TIME: 03-27-2009 16:50:20

VERSION: 01.16.2009
 VOLUME LIBRARY VERSION: 01.28.2009

SPECIES	PROD	VOLUME EQUATION	STUMP HEIGHT	TOTAL CUBIC VOLUME	PRIMARY ***** PRODUCT *****				SECONDARY ***** PRODUCT *****				Z SCORE
					MIN TOP DIB	BDFT	CUFT	CORDS	MIN TOP DIB	BDFT	CUFT	CORDS	
316	01	900CLKE316	0.0	NO	9.6	YES	YES	NO	5.0	YES	YES	NO	0.000
316	02	900CLKE316	0.0	NO	9.6	NO	YES	YES	5.0	NO	NO	NO	0.000
318	01	900CLKE318	0.0	NO	9.6	YES	YES	NO	5.0	YES	YES	NO	0.000
371	01	900CLKE371	0.0	NO	9.6	YES	YES	NO	5.0	YES	YES	NO	0.000
371	02	900CLKE371	0.0	NO	9.6	NO	YES	YES	5.0	NO	NO	NO	0.000
531	01	900CLKE531	0.0	NO	9.6	YES	YES	NO	5.0	YES	YES	NO	0.000
531	02	900CLKE531	0.0	NO	9.6	NO	YES	YES	5.0	NO	NO	NO	0.000
541	01	900CLKE541	0.0	NO	9.6	YES	YES	NO	5.0	YES	YES	NO	0.000
762	01	900CLKE762	0.0	NO	9.6	YES	YES	NO	5.0	YES	YES	NO	0.000
762	02	900CLKE762	0.0	NO	9.6	NO	YES	YES	5.0	NO	NO	NO	0.000

002769

A1: STRATA, UNIT AND PLOT REPORT
CRUISE#: 30714 SALE#: 30714
SALENAME: OGM B028 DUHREC 5W
RUN DATE & TIME: 03-27-2009 16:50:20

PAGE 3

VERSION: 01.16.2009
VOLUME LIBRARY VERSION: 01.28.2009

CRUISE NO.	CUTTING UNIT NO.	CUTTING UNIT ACRES	CUTTING UNIT DESCRIPTION	LOG METHOD	PAYMENT UNIT NO.
30714	01	3.00			
TOTAL SALE ACRES:		3.00			

002770

A1: STRATA, UNIT AND PLOT REPORT
CRUISE#: 30714 SALE#: 30714
SALENAME: OGM B028 DUHREC 5W
RUN DATE & TIME: 03-27-2009 16:50:20

PAGE 4

VERSION: 01.16.2009
VOLUME LIBRARY VERSION: 01.28.2009

CRUISE NO.	STRATA NO.	CRUISE METHOD	STRATA ACRES	BAF	PLOT SIZE	NO. OF PLOTS	STRATA DESCRIPTION	DATE MMYYYY
30714	1	STR	3.00	0.00	0.	0	SAW	0 0
30714	2	100	3.00	0.00	0.	0	OTHER SAW	0 0
30714	3	STR	3.00	0.00	0.	0	PULP	0 0

A2: LISTING OF TREE MEASUREMENTS AND CHARACTERISTICS
 CRUISE#: 30714 SALE#: 30714
 SALENAME: OGM B028 DUHREC 5W
 RUN DATE & TIME: 03-27-2009 16:50:20

VERSION: 01.16.2009
 VOLUME LIBRARY VERSION: 01.28.2009

				T		P	M		M	M
				C R	U	R	L		R	R
		P P	U C E		S	K	I		H	H
	S	R R S	T N E		O E R	V			T	T
S	P	O O M	/ T		F E	E D				
T	E	D D P	L / C		N I	/ B		P	S	
R U	T C		E M O		M	N D H		R	E	
A N	R I	P S G	A E U		E D I	E -				
T I	E E	R E R	V A N		A E T	A O		P	P	
A T	E S	I C P	E S T		S F L	D B		D	D	

1	01	2	762	01	02	C1	C M	1	03	0	Z L	15.1	38	58
1	01	3	762	01	02	C2	C M	1	03	0	B L	17.3	17	72
1	01	5	762	01	02	C1	C M	1	03	0	Z L	11.9	12	48
1	01	6	762	01	02	C1	C M	1	03	0	B L	13.5	27	82
1	01	7	762	01	02	C2	C M	1	03	10	Z L	25.1	37	78
1	01	8	371	01	02	BE	C M	1	03	15	B L	16.8	11	60
1	01	11	762	01	02	C1	C M	1	03	0	Z L	16.2	40	60
1	01	12	762	01	02	C2	C M	1	03	10	Z L	18.2	38	62
1	01	13	762	01	02	C2	C M	1	03	0	B L	18.5	48	70
1	01	16	762	01	02	C1	C M	1	03	0	B L	13.3	24	73
1	01	17	762	01	02	C1	C M	1	03	0	Z L	13.2	33	68
1	01	18	762	01	02	C2	C M	1	03	0	B L	17.2	48	76
1	01	20	762	01	02	C1	C M	1	03	0	Z L	12.7	33	72
1	01	21	762	01	02	C2	C M	1	03	10	B L	23.6	43	68
1	01	23	762	01	02	C1	C M	1	03	0	Z L	15.4	46	78
1	01	25	762	01	02	C1	C M	1	03	0	B L	15.7	32	76
1	01	26	762	01	02	C1	C M	1	03	0	B L	13.7	27	73
1	01	27	762	01	02	C2	C M	1	03	0	Z L	18.4	40	80
1	01	28	371	01	02	BE	C M	1	03	0	B L	12.2	13	45
1	01	31	762	01	02	C1	C M	1	03	0	Z L	14.4	40	70
1	01	33	762	01	02	C2	C M	1	03	0	B L	17.4	41	62
1	01	34	762	01	02	C2	C M	1	03	0	B L	21.7	55	85
1	01	35	762	01	02	C2	C M	1	03	0	Z L	19.9	48	82
1	01	37	762	01	02	C2	C M	1	03	0	Z L	19.4	45	88
1	01	38	762	01	02	C2	C M	1	03	25	B L	21.0	45	88
1	01	40	762	01	02	C1	C M	1	03	0	Z L	13.2	30	79
1	01	41	762	01	02	C1	C M	1	03	5	B L	16.0	45	75
1	01	43	762	01	02	C2	C M	1	03	0	Z L	20.3	68	89
1	01	44	531	01	02	BE	C M	1	03	0	B L	12.0	13	47
1	01	45	762	01	02	C1	C M	1	03	0	B L	13.8	21	76
1	01	48	762	01	02	C2	C M	1	03	0	B L	19.6	50	85
1	01	49	762	01	02	C2	C M	1	03	0	Z L	19.8	55	69
1	01	50	371	01	02	BE	C M	1	03	0	Z L	12.2	14	45
1	01	52	762	01	02	C1	C M	1	03	0	Z L	15.2	42	82

A2: LISTING OF TREE MEASUREMENTS AND CHARACTERISTICS
 CRUISE#: 30714 SALE#: 30714
 SALENAME: OGM B028 DUHREC 5W
 RUN DATE & TIME: 03-27-2009 16:50:20

VERSION: 01.16.2009
 VOLUME LIBRARY VERSION: 01.28.2009

				T		P	M		M	M
				C	U	R	L		R	R
		P	P	U	S	K	I		H	H
	S	R	R	S	O	E	R	V	T	T
	P	O	O	M	F	E	E	D		
S	E	D	D	P	N	I	/	B	P	S
T	C				M	N	D	H	R	E
R		P	S	G	E	D	I	E		
A	R	R	E	R	V	A	N			
T	E	R	E	R	V	A	N		P	P
A	E	I	C	P	E	S	T		D	D

2	01	1	316	01	02	RM	C	M	1	03	5	B	L	16.2	29	66
2	01	2	316	01	02	RM	C	M	1	03	0	B	L	11.7	10	60
2	01	3	316	01	02	RM	C	M	1	03	5	B	L	15.4	18	52
2	01	4	316	01	02	RM	C	M	1	03	0	Z	L	15.1	35	62
2	01	5	541	01	02	WA	C	M	1	03	15	B	L	14.0	17	59
2	01	6	316	01	02	RM	C	M	1	03	5	B	L	14.0	21	61
2	01	7	316	01	02	RM	C	M	1	03	0	Z	L	16.0	30	60
2	01	8	316	01	02	RM	C	M	1	03	0	B	L	12.5	13	61
2	01	9	316	01	02	RM	C	M	1	03	0	L		12.8	16	50
2	01	10	318	01	02	SM	C	M	1	03	0	Z	L	12.1	14	50
2	01	11	318	01	02	SM	C	M	1	03	30	B	L	12.1	15	51
2	01	12	318	01	02	SM	C	M	1	03	30	B	L	14.2	13	50
2	01	13	316	01	02	RM	C	M	1	03	0	Z	L	15.4	40	70
2	01	14	541	01	02	WA	C	M	1	03	0	B	L	11.0	12	45
2	01	15	316	01	02	RM	C	M	1	03	0	Z	L	11.5	16	69
2	01	16	316	01	02	RM	C	M	1	03	0	B	L	13.5	15	56
2	01	17	316	01	02	RM	C	M	1	03	0	B	L	14.0	25	57
2	01	18	316	01	02	RM	C	M	1	03	0	B	L	11.4	13	60
2	01	19	316	01	02	RM	C	M	1	03	0	Z	L	13.4	24	58
2	01	20	316	01	02	RM	C	M	1	03	0	B	L	12.1	18	45
2	01	21	316	01	02	RM	C	M	1	03	0	B	L	12.9	25	57
3	01	1	316	02	02	PU	C	M	1	03	0	B	L	7.7	0	25
3	01	4	316	02	02	PU	C	M	1	03	0	Z	L	7.2	0	20
3	01	9	371	02	02	PU	C	M	1	03	0	B	L	9.1	0	37
3	01	10	371	02	02	PU	C	M	1	03	0	Z	L	12.1	0	30
3	01	14	316	02	02	PU	C	M	1	03	0	Z	L	10.9	0	35
3	01	15	762	02	02	PU	C	M	1	03	0	B	L	8.2	0	45
3	01	19	316	02	02	PU	C	M	1	03	0	B	L	6.5	0	12
3	01	22	316	02	02	PU	C	M	1	03	0	Z	L	6.5	0	20
3	01	24	316	02	02	PU	C	M	1	03	0	B	L	8.4	0	27
3	01	29	371	02	02	PU	C	M	1	03	0	B	L	8.9	0	22
3	01	30	531	02	02	PU	C	M	1	03	0	B	L	6.2	0	9
3	01	32	316	02	02	PU	C	M	1	03	0	Z	L	9.2	0	30
3	01	36	316	02	02	PU	C	M	1	03	0	B	L	6.1	0	10

A2: COUNT TABLE INFORMATION
CRUISE#: 30714 SALE#: 30714
SALENAME: OGM B028 DUHREC 5W
RUN DATE & TIME: 03-27-2009 16:50:20

VERSION: 01.16.2009
VOLUME LIBRARY VERSION: 01.28.2009

THE FOLLOWING INFORMATION IS PROVIDED FOR SELECT METHODS AND REPRESENTS WHAT ONCE WERE COUNT RECORDS

CUTTING UNIT	STRATUM	SAMPLE GROUP	SPECIES	FREQUENCY	KZ VALUE	TALLY COUNT	KPI	DESCRIPTION
01	1	C1	762	5	0	57		SMALL CHERRY
01	1	C2	762	3	0	29		BIG CHERRY
01	1	BE	531	3	0	16		BE BIR
01	3	PU	762	10	0	184		PULP
01	1	BE	371	3	0			
01	3	PU	316	10	0			
01	3	PU	531	10	0			
01	3	PU	371	10	0			
01	3	PU	541	10	0			

B1: LOW LEVEL VOLUME SUMMARY
 CUT AND LEAVE TREES
 CRUISE#: 30714 SALE#: 30714
 SALENAME: OGM B028 DUHREC 5W
 RUN DATE & TIME: 03-27-2009 16:50:20

VERSION: 01.16.2009
 VOLUME LIBRARY VERSION: 01.28.2009

															M		M																
															E		E																
															A		A																
															N		N																
															M		M																
															R		R																
															H		H																
															A		A																
															T		T																
															P		P																
															S		S																
															B		B																
															C		C																
															D		D																
															U		U																
															F		F																
															T		T																
															R		R																
															A		A																
															V		V																
															M		M																
															E		E																
															P		P																
															M		M																
															D		D																
															C		C																
															O		O																
															N		N																
															S		S																
															R		R																
															T		T																
															E		E																
															R		R																
															C		C																
															O		O																
															L		L																
															E		E																
															C		C																
															A		A																
															S		S																
															G		G																
															P		P																
															M		M																
															D		D																
															C		C																
															O		O																
															N		N																
															S		S																
															R		R																
															T		T																
															E		E																
															R		R																
															C		C																
															O		O																
															L		L																
															E		E																
															C		C																
															A		A																
															S		S																
															G		G																
															P		P																
															M		M																
															D		D																
															C		C																
															O		O																
															N		N																
															S		S																
															R		R																
															T		T																
															E		E																
															R		R																
															C		C																
															O		O																
															L		L																
															E		E																
															C		C																
															A		A																
															S		S																
															G		G																
															P		P																
															M		M																
															D		D																
															C		C																
															O		O																
															N		N																
															S		S																
															R		R																
															T		T																
															E		E																
															R		R																
															C		C																
															O		O																
															L		L																
															E		E																
															C		C																
															A		A																
															S		S																
															G		G																
															P		P																
															M		M																
															D		D																
															C		C																
															O		O																
															N		N																
															S		S																
															R		R																
															T		T																
															E		E																
															R		R																
															C		C																
															O		O																
															L		L																
															E		E																
															C		C																
															A		A																
															S		S																
															G		G																
															P		P																
															M		M																
															D		D																
															C		C																
															O		O																
															N		N																
															S		S																
															R		R																
															T		T																
															E		E																
															R		R																
															C		C																
															O		O																
															L		L																
															E		E																
															C		C																
															A		A																
															S		S																
															G		G																
															P		P																
															M		M																
															D		D																
															C		C																
															O		O																
															N		N																
															S		S																
															R		R																
															T		T																
															E		E																
															R		R																
															C		C																
															O		O																
															L		L																
															E		E																
															C		C																
															A		A																
															S		S																
															G		G																
															P		P																
															M		M																
															D		D																
															C		C																
															O		O																
															N		N																
															S		S																
															R		R																
															T		T																
															E		E																
															R		R																
															C		C																
															O		O																
															L		L																
															E		E																
															C		C																
															A		A																
															S		S																
															G		G																
															P		P																
															M		M																
															D		D																
															C		C																
															O		O																
															N		N																
															S		S																
															R		R																
															T		T																
															E		E																
															R		R																
															C		C																
															O		O																
															L		L																
															E		E																
															C		C																
															A		A																
															S		S																
															G		G																
															P		P																
															M		M																
															D		D																
															C		C																
															O		O																
															N		N																
															S		S																
															R		R																
															T		T																
															E		E																
															R		R																
															C		C																
															O		O																
															L		L																
															E		E																
															C		C																
															A		A																
															S		S																
															G		G																
															P		P																
															M		M																
															D		D																
															C		C																
															O		O																
															N		N																
															S		S																
															R		R																
															T		T																
															E		E																
															R		R																
															C		C																
															O		O																
															L		L																
															E		E																
															C		C																
															A		A																
															S		S																
															G		G																
															P		P																
															M		M																
															D		D																
															C		C																
															O		O																
															N		N																
															S		S																
															R		R																
															T		T																
															E		E																
															R		R																
															C		C																
															O		O																
															L		L																
															E		E																
															C		C																
															A		A																
															S		S																
															G		G																
															P		P																
															M		M																
															D		D																
															C		C																
															O		O																
															N		N																
															S		S																
															R		R																
															T		T																
															E		E																
															R		R																
															C		C																
															O		O																
															L		L																
															E		E																
															C		C																
															A		A																
															S		S																

B1: LOW LEVEL VOLUME SUMMARY
 CUT AND LEAVE TREES
 CRUISE#: 30714 SALE#: 30714
 SALENAME: OGM B028 DUHREC 5W
 RUN DATE & TIME: 03-27-2009 16:50:20

VERSION: 01.16.2009
 VOLUME LIBRARY VERSION: 01.28.2009

										M	M																		
										E	E																		
										A	A																		
										N	N																		
										M	M																		
										R	R	AVG	GRSS	NET															
										E	H	H	DEFT	GRSS	NET														
										A	T	T	%	%															
										# OF	QUAD	N	BDFT	BDFT	EST.	***** STRATA LEVEL *****													
										MEAS	MEAN	D	R	E	D	U	CUFT	CUFT	NO OF	***** VOLUME *****									
										TREES	DBH	H	D	D	T	T	RAT.	RAT.	TREES	BDFT	CUFT	BDFT	CUFT	CORDS					

PRODUCT SOURCE KEY:

- P = PRIMARY PRODUCT
- S = SECONDARY PRODUCT
- R = RECOVERABLE PRODUCT

The following items are not reported and/or calculated for secondary or recovered products but are shown here as blank so the associated volumes can be reported: Number of measured trees, Quad mean DBH, Mean DBH, Mean height(s), Average defect, any Ratio, Estimated number of trees.

CP1: VOLUME SUMMARY FOR SAMPLE GROUP
 FOR CUT TREES ONLY
 CRUISE#: 30714 SALE#: 30714
 SALENAME: OGM B028 DUHREC 5W
 RUN DATE & TIME: 03-27-2009 16:50:20

VERSION: 01.16.2009
 VOLUME LIBRARY VERSION: 01.28.2009

										M	M						
										E	E						
										A	A						
										N	N						
										M	M						
										R	R	AVE DEF					
P	S			# OF			M	M			GROSS	NET					
R	U	A	A	TREES	A	A	A	A	%	%	BDFT	BDFT	***** STRATA LEVEL *****				
O	M	S	L	M	QUAD	N	P	S			EST.	***** VOLUME *****					
D		U	L	U	L	MEAN	D	R	B	C	CUFT	CUFT	# OF				
P	S	G	S	R	I	D	R	E	D	U	CUFT	CUFT	# OF	*** GROSS ***	**** NET ****		
S	U	R	T	E	E	B	P	P	F	F	RATIO	RATIO	TREES	BDFT	CUFT	BDFT	CUFT
T	O	R	T	E	E	B	P	P	T	T	RATIO	RATIO	TREES	BDFT	CUFT	BDFT	CUFT
A	M	P	M	D	D	DBH	H	D	D	D	RATIO	RATIO	TREES	BDFT	CUFT	BDFT	CUFT
A	T	E	M	P	M	D	D	DBH	H	D	RATIO	RATIO	TREES	BDFT	CUFT	BDFT	CUFT

PRODUCT SOURCE KEY:

- P = PRIMARY PRODUCT
- S = SECONDARY PRODUCT
- R = RECOVERABLE PRODUCT

The following items are not reported and/or calculated for secondary or recovered products but are shown here as blank so the associated volumes can be reported: Number of measured trees, Quad mean DBH, Mean DBH, Mean height(s), Average defect, any Ratio, Estimated number of trees.

DS1: ERROR TERM, VOLUME AND CONFIDENCE INTERVAL
 PRIMARY PRODUCT VOLUME
 FOR CUT TREES ONLY
 CRUISE#: 30714 SALE#: 30714
 SALENAME: OGM B028 DUHREC 5W
 RUN DATE & TIME: 03-27-2009 16:50:20

VERSION: 01.16.2009
 VOLUME LIBRARY VERSION: 01.28.2009

		***** PRIMARY PRODUCT GROSS VOLUME *****					***** PRIMARY PRODUCT NET VOLUME *****				
		***** 95% CONFIDENCE *****					***** 95% CONFIDENCE *****				
		INTERVAL					INTERVAL				
A	T M	VOLUME*	ERROR	FROM	TO	VOLUME*	ERROR	FROM	TO		
1	01 03	5220.9	10.74	4660.	5782.	5070.6	10.48	4539.	5602.		
2	01 03	338.5	0.00	339.	339.	326.5	0.00	327.	327.		
3	02 03	1353.4	31.50	927.	1780.	1353.4	31.50	927.	1780.		
----- AGGREGATED BY PRODUCT -----											
	01 03	5559.4	10.09	4999.	6120.	5397.1	9.85	4866.	5929.		
	02 03	1353.4	31.50	927.	1780.	1353.4	31.50	927.	1780.		
----- AGGREGATED BY UNIT OF MEASURE -----											
	03	6912.7	10.19	6208.	7617.	6750.5	10.09	6069.	7432.		
----- AGGREGATED BY STRATA -----											
1	03	5220.9	10.74	4660.	5782.	5070.6	10.48	4539.	5602.		
2	03	338.5	0.00	339.	339.	326.5	0.00	327.	327.		
3	03	1353.4	31.50	927.	1780.	1353.4	31.50	927.	1780.		

* UOM DETERMINES VALUES USED IN CALCULATION UNDER VOLUME

DS1: ERROR TERM, VOLUME AND CONFIDENCE INTERVAL
 SECONDARY PRODUCT VOLUME
 FOR CUT TREES ONLY
 CRUISE#: 30714 SALE#: 30714
 SALENAME: OGM B028 DUHREC 5W
 RUN DATE & TIME: 03-27-2009 16:50:20

VERSION: 01.16.2009
 VOLUME LIBRARY VERSION: 01.28.2009

P		***** SECONDARY PRODUCT GROSS VOLUME *****					***** SECONDARY PRODUCT NET VOLUME *****				
S R U		***** 95% CONFIDENCE *****					***** 95% CONFIDENCE *****				
T O		INTERVAL					INTERVAL				
R D O											
A U F											
T C											
A T M		VOLUME*	ERROR	FROM	TO	VOLUME*	ERROR	FROM	TO		
1	02 03	1968.7	20.46	1566.	2372.	1968.7	20.46	1566.	2372.		
2	02 03	260.4	0.00	260.	260.	260.4	0.00	260.	260.		
----- AGGREGATED BY PRODUCT -----											
	02 03	2229.1	18.07	1826.	2632.	2229.1	18.07	1826.	2632.		
----- AGGREGATED BY UNIT OF MEASURE -----											
	03	2229.1	18.07	1826.	2632.	2229.1	18.07	1826.	2632.		
----- AGGREGATED BY STRATA -----											
1	03	1968.7	20.46	1566.	2372.	1968.7	20.46	1566.	2372.		
2	03	260.4	0.00	260.	260.	260.4	0.00	260.	260.		

* UOM DETERMINES VALUES USED IN CALCULATION UNDER VOLUME

* UOM DETERMINES VALUES USED IN CALCULATION UNDER VOLUME

DS1: ERROR TERM, VOLUME AND CONFIDENCE INTERVAL
 TOTAL VOLUME AGGREGATED BY PRODUCT
 FOR PRIMARY, SECONDARY AND RECOVERED PRODUCTS
 CRUISE#: 30714 SALE#: 30714
 SALENAME: OGM B028 DUHREC 5W
 RUN DATE & TIME: 03-27-2009 16:50:20

VERSION: 01.16.2009
 VOLUME LIBRARY VERSION: 01.28.2009

S T R A T E G Y	P R O D U C T	***** TOTAL GROSS VOLUME *****				***** TOTAL NET VOLUME *****			
		VOLUME*	ERROR	FROM	TO	VOLUME*	ERROR	FROM	TO
***** 95% CONFIDENCE *****									
INTERVAL									
----- AGGREGATED BY PRODUCT -----									
01	03	5559.4	10.09	4999.	6120.	5397.1	9.85	4866.	5929.
02	03	3582.5	16.37	2996.	4169.	3582.5	16.37	2996.	4169.
----- AGGREGATED BY UNIT OF MEASURE -----									
	03	9141.9	8.88	8330.	9953.	8979.6	<u>8.81</u>	8188.	9771.
----- AGGREGATED BY STRATA -----									
1	03	7189.6	9.60	6499.	7880.	7039.4	<u>9.47</u>	6373.	7706.
2	03	598.9	0.00	599.	599.	586.9	<u>0.00</u>	587.	587.
3	03	1353.4	31.50	927.	1780.	1353.4	<u>31.50</u>	927.	1780.

* UOM DETERMINES VALUES USED IN CALCULATION UNDER VOLUME

UC5: VOLUME BY SPECIES WITHIN CUTTING UNIT ACROSS ALL STRATA *
 FOR CUT TREES ONLY
 CRUISE#: 30714 SALE#: 30714
 SALENAME: OGM B028 DUHREC SW
 RUN DATE & TIME: 03-27-2009 16:50:20

VERSION: 01.16.2009
 VOLUME LIBRARY VERSION: 01.28.2009

S P E C I E S	TOTAL		***** SAWTIMBER ***** (PROD = 01 UM = 01, 03)				***** NON-SAWTIMBER ***** (PROD NOT = 01 UM = 01, 02, 03) (AND ALL SECONDARY & RECOVERED PRODUCT VOLUMES)				
	EST.	EST.	** GROSS VOLUME **		** NET VOLUME **		*** GROSS ***	*** NET ***	*** NET ***		
	# OF TREES	# OF TREES	BDFT	CUFT	BDFT	CUFT	BDFT	CUFT	BDFT	CUFT	CORDS
01 316	128	16	1589	288	1571	284	0	859	0	859	8.98
01 318	3	3	150	31	120	24	0	38	0	38	0.00
01 371	71	15	745	169	690	157	0	662	0	662	5.61
01 531	16	5	165	43	165	43	0	56	0	56	0.00
01 541	2	2	111	20	99	18	0	29	0	29	0.00
01 762	138	116	31662	5009	30752	4871	0	1939	0	1939	3.37
UNIT 01 TOTAL	359	157	34422	5559	33397	5397	0	3583	0	3583	17.96

S P E C I E S	***** SAWTIMBER *****		***** NON-SAWTIMBER *****		***** SAWTIMBER *****		***** NON-SAWTIMBER *****		***** SAWTIMBER *****		***** NON-SAWTIMBER *****	
	TOT EST # OF TREES	EST # OF TREES	** GROSS VOLUME ** BDFT	** GROSS VOLUME ** CUFT	** NET VOLUME ** BDFT	** NET VOLUME ** CUFT	GROSS BDFT	GROSS CUFT	NET BDFT	NET CUFT	CORDS	
316	128	16	1589	288	1571	284	0	859	0	859	8.98	
318	3	3	150	31	120	24	0	38	0	38	0.00	
371	71	15	745	169	690	157	0	662	0	662	5.61	
531	16	5	165	43	165	43	0	56	0	56	0.00	
541	2	2	111	20	99	18	0	29	0	29	0.00	
762	138	116	31662	5009	30752	4871	0	1939	0	1939	3.37	

OVERALL TOTALS-- 359 157 34422 5559 33397 5397 0 3583 0 3583 17.96

* FOR TREE-BASED SAMPLES, THE CUTTING UNIT VOLUME IS BASED ON THE # OF TREES TALLIED OR THE SUM OF KPIS THAT FALL WITHIN THE CUTTING UNIT. FOR AREA-BASED SAMPLES, THE CUTTING UNIT VOLUME IS BASED ON AN AVERAGE VOLUME PER ACRE AT THE STRATA LEVEL TIMES THE NUMBER OF ACRES IN THE CUTTING UNIT.

UC6: VOLUME BY SAMPLE GROUP WITHIN CUTTING UNIT ACROSS ALL STRATA *
 FOR CUT TREES ONLY
 CRUISE#: 30714 SALE#: 30714
 SALENAME: OGM B028 DUHREC 5W
 RUN DATE & TIME: 03-27-2009 16:50:20

VERSION: 01.16.2009
 VOLUME LIBRARY VERSION: 01.28.2009

S M P U N I T	TOTAL EST.	***** SAWTIMBER ***** (PROD = 01 UM = 01, 03)				***** NON-SAWTIMBER ***** (PROD NOT = 01 UM = 01, 02, 03) (AND ALL SECONDARY & RECOVERED PRODUCT VOLUMES)					
		# OF TREES	# OF TREES	** GROSS VOLUME ** BDFT CUFT	** NET VOLUME ** BDFT CUFT	*** GROSS BDFT CUFT	*** BDFT CUFT	*** NET BDFT CUFT	*** BDFT CUFT	CORDS	
01 BE	20	20	910	212	855	200	0	289	0	289	0.00
01 C1	72	72	11794	2003	11731	1992	0	972	0	972	0.00
01 C2	44	44	19868	3006	19021	2878	0	708	0	708	0.00
01 PU	202	0	0	0	0	0	0	1353	0	1353	17.96
01 RM	16	16	1589	288	1571	284	0	193	0	193	0.00
01 SM	3	3	150	31	120	24	0	38	0	38	0.00
01 WA	2	2	111	20	99	18	0	29	0	29	0.00
UNIT 01 TOTAL	359	157	34422	5559	33397	5397	0	3583	0	3583	17.96

S U B T O T A L S		*****SAWTIMBER*****				*****NON-SAWTIMBER*****					
SAMPLE GROUP	TOT EST # OF TREES	EST # OF TREES	** GROSS VOLUME ** BDFT CUFT	** NET VOLUME ** BDFT CUFT	GROSS BDFT	GROSS CUFT	NET BDFT	NET CUFT	CORDS		
BE	20	20	910	212	855	200	0	289	0	289	0.00
C1	72	72	11794	2003	11731	1992	0	972	0	972	0.00
C2	44	44	19868	3006	19021	2878	0	708	0	708	0.00
PU	202	0	0	0	0	0	0	1353	0	1353	17.96
RM	16	16	1589	288	1571	284	0	193	0	193	0.00
SM	3	3	150	31	120	24	0	38	0	38	0.00
WA	2	2	111	20	99	18	0	29	0	29	0.00

OVERALL TOTALS-- 359 157 34422 5559 33397 5397 0 3583 0 3583 17.96

* FOR TREE-BASED SAMPLES, THE CUTTING UNIT VOLUME IS BASED ON THE # OF TREES TALLIED OR THE SUM OF KPIS THAT FALL WITHIN THE CUTTING UNIT. FOR AREA-BASED SAMPLES, THE CUTTING UNIT VOLUME IS BASED ON AN AVERAGE VOLUME PER ACRE AT THE STRATA LEVEL TIMES THE NUMBER OF ACRES IN THE CUTTING UNIT.

002784

EDIT MESSAGES

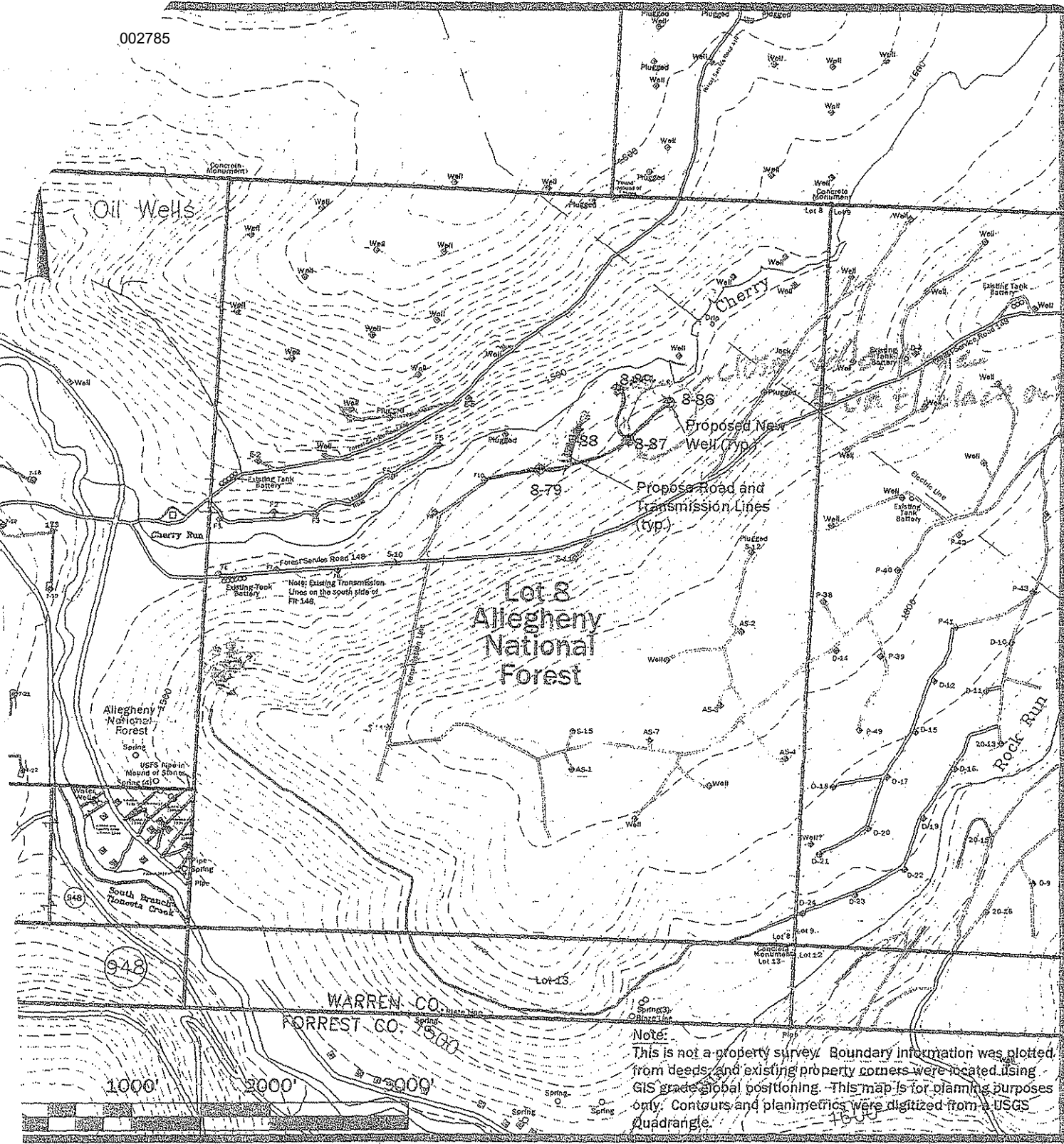
PAGE 18

CRUISE#: 30714 SALE#: 30714
SALENAME: OGM B028 DUHREC 5W
RUN DATE & TIME: 03-27-2009 16:50:20

VERSION: 01.16.2009
VOLUME LIBRARY VERSION: 01.28.2009

IDENTIFIER EDIT MESSAGE

2 HE - Sample Group does not have at least one measured tree



Note:
 This is not a property survey. Boundary information was plotted from deeds, and existing property corners were located using GIS grade global positioning. This map is for planning purposes only. Contours and planimetrics were digitized from a USGS Quadrangle.

Scale: 1" = 1000'

Date: 05/09/2008

HAMPSON SURVEYING
 Harmer Street, Box 14 • Warren, PA 16365
 (814)723-1175 • Fax: (814)723-1176
 hampson@westpa.net

Exhibit - Site Plan
 for
 Duhring Resource Company
 Lot 8
 Allegheny National Forest
 Sheffield Township, Warren County
 Pennsylvania

** Resource crew finished back 2-stripe for Sheldon*

B-028 5W