



N O T E S :

- 1. THIS SURVEY WAS PERFORMED AT THE REQUEST OF THE FOREST SUPERVISOR.
- 2. SET MONUMENTS ARE 2" X 30" IRPN PIPES WITH BRASS CAPS.

UNITED STATES OF AMERICA  
TRACT 1j

DEED MERIDIAN CORNER 2 TO 3 USA TRACT 1j

UNITED STATES OF AMERICA  
TRACT 1j

CORNER 4  
MONUMENT SET

N89°45'00"W

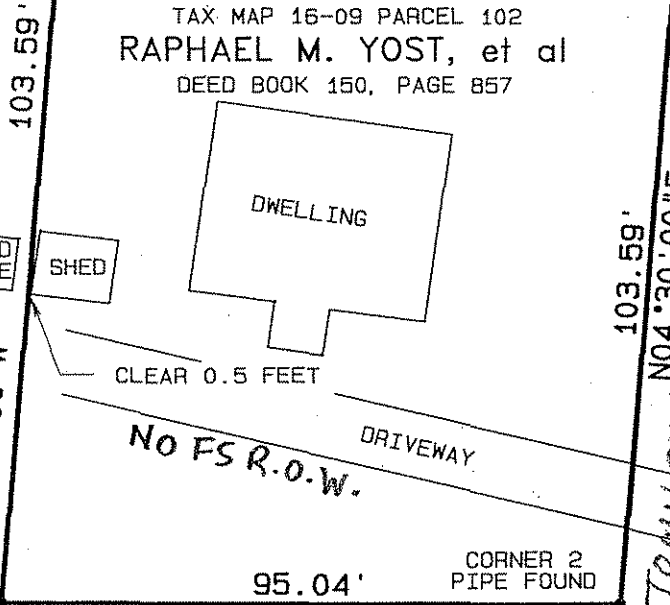
95.04'

CORNER 3  
PIPE FOUND

TAX MAP 16-09 PARCEL 102

RAPHAEL M. YOST, et al

DEED BOOK 150, PAGE 857



WOOD PILE

SHED

DWELLING

CLEAR 0.5 FEET

NO FS R.O.W.

DRIVEWAY

CORNER 1  
MONUMENT SET

S89°45'00"E

CORNER 2  
PIPE FOUND

UNITED STATES OF AMERICA  
TRACT 1j

Called Mike Bowmaster  
@ 756 AM - N.R.O.W.



*Ralph Michael Bowmaster*

PLAT SHOWING THE RESURVEY OF  
EXCEPTION NUMBER 1 OF TRACT 1j  
JENKS TOWNSHIP FOREST COUNTY, PENNSYLVANIA

SEPTEMBER 26, 2007

SCALE: 1" = 30'

ALLEGHENY NATIONAL FOREST  
222 LIBERTY STREET  
WARREN PENNSYLVANIA 16365

SURVEYED BY: RALPH M. BOWMASTER, LAND SURVEYOR